

B2 Sheet-fed Inkjet Digital Press

RICOH Pro Z75

RICOH
imagine. change.



Pro Z75

4,500
sph full-color

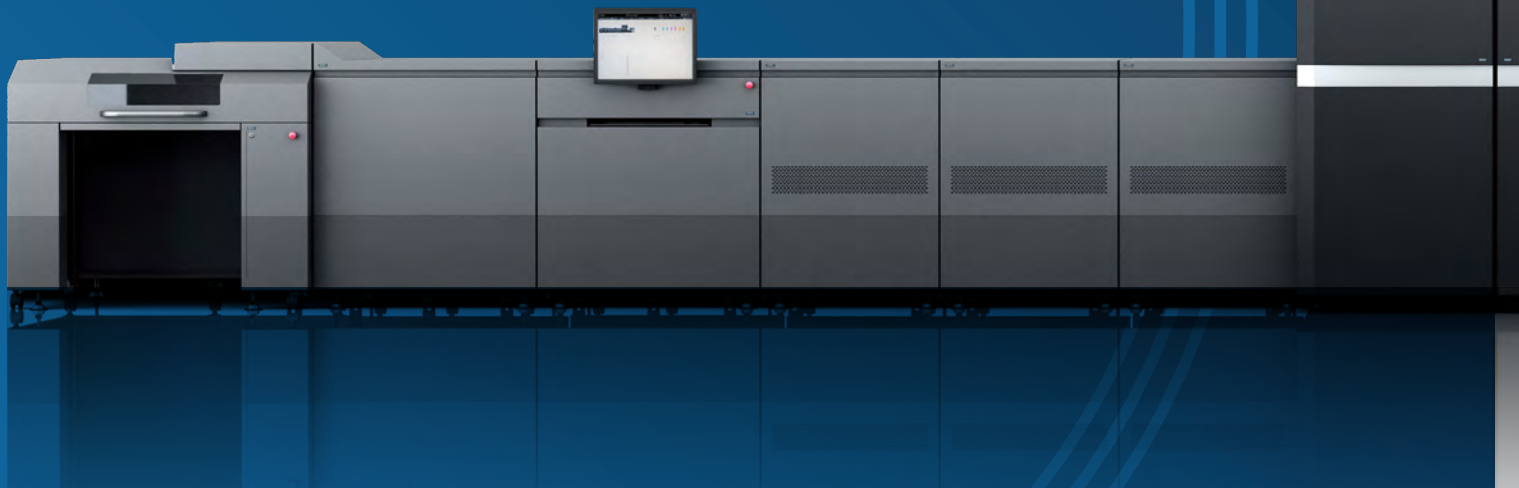
RICOH Graphic Communications

For more than 50 years, Ricoh has been known for game-changing inkjet technology

Our inkjet legacy began with the introduction of bi-pitch laminated piezo actuator printhead technology, which enables even, accurate control of ink droplets. Today, our printheads are famous for their speed, precision and reliability. Used by manufacturers around the world, Ricoh innovation has expanded what's possible with exciting new ways to print on metal, wood, synthetics, glass and more.

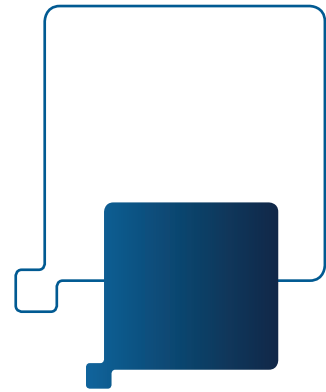
Ricoh is credited with advancements in drying technologies and 3D printing which remain essential to the production of pioneering medical devices such as prosthetics, hearing aids and dental appliances.

Our commitment to research and development is reinforced by an unparalleled network of master engineers, solutions architects, color specialists, software developers, business consultants and project managers. From assessment to implementation and each day thereafter, you can count on us to drive the success of your business with the most relevant technologies and world-class support.



RICOH Pro Z75 B2 Sheet-fed Inkjet Digital Press

Data is changing the direction of every business today



As technology continues to influence the trend towards variable, short-run print jobs, the need to migrate from offset to digital solutions has become paramount. Brands are creating bespoke products and localized packaging. Marketers are executing campaigns with 1:1 messaging. And customers, whether in retail, education, healthcare, finance or manufacturing, expect personalized experiences. To stand out, print buyers need high-quality, affordable, data-driven communications — and the RICOH Pro Z75 is here so you can deliver.

Explore the business benefits of the world's first aqueous pigment B2 automatic perfecting sheet-fed inkjet digital press. Meeting you where you are today — and taking you into the future.

Media flexibility: Produce a wide range of applications with support for up to 24 pt and exceptional quality across uncoated, offset coated and inkjet-treated stocks.

Application diversity: Run multi-up jobs, signature sheets, unique oversized applications and short-run packaging on a B2 sheet size up to 23" x 29".

Improved productivity: Deliver more in less time with speeds up to 4,500 sph and the ability to print double-sided sheets without operator intervention.

Streamlined workflow: Eliminate downtime and finish jobs faster with sheets that are dried instantly and ready for bindery.

Market expansion: Approach new markets with data-driven offerings that increase response rates and lead to higher purchases.

Add a premium touch: Enhance output with specialty finishes and embellishments, and offer a higher level of perceived value with digital technologies that augment print.



Designed with intention, the RICOH Pro Z75 illuminates a seamless path to accelerate offset to digital transformations



1 Pallet feeder unit

An optional high-capacity pallet feeder that can be configured in addition to the multi-sheet feed unit.

2 Media support

A broad range of media support (up to a B2 sheet size) offers application extension opportunities and new profitable income streams.

3 Multi-sheet feed unit

Air-assist vacuum feeding prevents double feeding and paper jams for smooth operations.

4 Sheet registration

Ricoh's proven swing-and-shift technology offers high sheet registration accuracy for an equivalent to offset quality.

5 Ink supply unit

Easy loading, large capacity ink supplies reduce the need to frequently change ink bottles.

6 High-speed printing

Up to 310 gsm/14 pt:

- Simplex (4/0) at 4,500 sph
- Duplex (4/4) at 2,250 sph

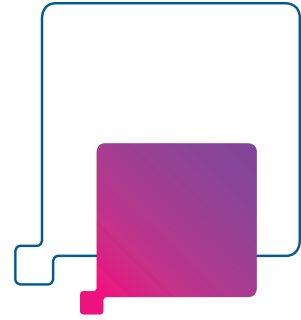
Up to 400 gsm/24 pt:

- Simplex (4/0) at 3,000 sph
- Duplex (4/4) at 1,150 sph

7 Print engine jetting unit

The latest generation of Ricoh's premium inkjet printheads feature multi-drop on-demand piezo technology for precise accuracy.

Standard blower units (3), optional additional high-capacity stacker and optional additional multi-sheet feed unit are not shown.



8 High-efficiency dryer units (3)
Reduce cockling and waviness and achieve high-quality sheets that are ready for finishing through the RICOH Pro Z75's patented drying technology that utilizes selective heating.

9 Cooling unit
Dissipates heat from sheets after the drying process to reduce the risk of ink transfer, streaking or scuffing, which minimizes paper waste.

10 24" operator touch panel
Supervise print jobs, paper-drawer levels, ink levels, maintenance schedules and more through an all-in-one dashboard.

11 Proofing table
A removable proofing table option offers flexible convenience for operator review.

12 Duplex unit
Automatically reverses sheet direction for printing side-2 (4/4) for the most productive print runs.

13 High-capacity stacker
Minimize operator intervention on long runs with a high-efficiency stacker that stacks supported media sizes up to 7,200 sheets.

14 Upper output tray
A convenient upper tray supports printed output of up to 100 sheets (all sizes).

Overcome production challenges and run more applications with the RICOH Pro Z75



Capture higher profits on more jobs.

- Utilize your current finishing equipment with the versatility of the B2 sheet.
- Run multi-up applications to improve shift productivity and meet tight deadlines.



Speed time from output to bindery.

- Innovative drying technologies deliver prints ready for finishing.
- Automated workflows eliminate manual steps and reduce human error.



Reduce dependencies on highly skilled operators.

- An intuitive interface and Fiery® digital front end allow for easy onboarding of operators.
- Powerful customization tools simplify complex jobs and boost efficiencies.



Offer customers more lead time and get to market faster by eradicating pre-printed shells and hybrid workflows between offset and digital.



Achieve consistent color without operator intervention utilizing technologies that automatically adjust settings.



Create personalized self-mailers, book wraps, short-run packaging and loyalty programs.



Easily manage print jobs with the powerful Fiery® Color Controller N-500 with Fiery® HyperRIP™.



Produce highly accurate, duplexed variable-data jobs with automatic perfecting capabilities.



Reduce pre-press expenses and offer jobs at more competitive price points with no makeready.



**Ricoh-developed from the ground up,
the RICOH Pro Z75 delivers quality that rivals litho.**

Liquid cooling technology improves printhead performance and produces the image quality you need to impress the most discerning clients and luxury brands. Razor-sharp text and fine lines provide an upscale appearance with 1200 × 1200 dpi and piezo actuator printhead technology. Aqueous pigment inks and advanced drying technology deliver vibrant output that is dried instantly with a smoother appearance and a base that's prime for post-print embellishments.

**Offset technology paired with cutting-edge innovation
for powerful performance.**

Rely on maximum uptime with air-assisted feeding and precise front-to-back accuracy via Ricoh's swing-and-shift technology. Experience fewer reprints with near-perfect registration resulting from a gripper-to-gripper system that transfers sheets from the paper path to the print drum. Count on accurate color-to-color registration that's achieved by vacuum wrapping the incoming paper around the perforated aluminum impression cylinder.

**Your inkjet experience will be smooth right from
the start, with a partnership that begins on day one.**

Onboarding and implementation determine how quickly and how well you go to market. Our Core Inkjet Services Team follows a step-by-step process to ensure a successful rollout. Led by a dedicated project manager, they will design and validate your workflow, educate you on paper profiling and confirm your files are running properly. Post implementation, tap into the RICOH Partner Team for additional training, app development, hardware maintenance, color adjustment and more.

RICOH Pro Z75 B2 Sheet-fed Inkjet Digital Press

SYSTEM SPECIFICATIONS

Imaging Technology

Piezo Drop on Demand
Dynamic Variable Drop Size – at 2 bits/drop
Ricoh Manufactured Printheads

Engine Technology

Inkjet 4-color CMYK
Duplex B2 sheet-fed system

Productivity/Print Speed

Simplex (4/0) at 4,500 sph (media up to 310 gsm/14 pt)
Duplex (4/4) at 2,250 sph (media up to 310 gsm/14 pt)
Simplex (4/0) at 3,000 sph (media up to 400 gsm/24 pt)
Duplex (4/4) at 1,500 sph (media up to 400 gsm/24 pt)

Image Resolution

1200 x 1200 dpi (independent of speed)

Media Sizes

Up to 23" x 29" (B2)

Printable Image Area Size (Max.)

22.4" x 28.4"

Media Weights

60 – 400 gsm (uncoated)
80 – 400 gsm (coated)
Caliper: 0.06 mm – 0.6 mm

Media Types

Offset coated, uncoated and inkjet-treated

Multi-sheet Feeder

Drawer Feeding Unit:
• Pile Height: up to 9.6"
• 2x drawers (connect up to 4 drawers)

High-capacity Stacker

Pile Height: up to 27.6"
(connect up to 2 units)

Pallet Feeder Option

- Max. Pile Height: 46.6" (includes pallet)
- Max. Pallet Weight: 1,543 lbs. (includes pallet) (must connect via the Multi-sheet Feeder)

Digital Front End (DFE) Fiery® Color Controller N-500

- OS: Windows 10 IoT Enterprise 2021 LTSC
- Fiery® FS500 Pro software
- CPU: (x4) Intel® Xeon® Gold 6226 Processor, 19.25M Cache, 2.70 GHz, 12 Core, TDP125W
- Memory: (x24) 16 GB DDR4-2933 2Rx8 ECC REG DIMM
- Fiery® HyperRIP™
- Adobe PDF Print Engine 5.5, Adobe PostScript® (CPSI) version 3020

System Dimensions (Standard Configuration)

480" x 156" x 92"

System Weight

29,762 lbs.

System Durability

- Max. Duty Cycle: 1.7M B2 ipm
- APV Range: 750K B2 ipm
- Heavy-duty-build quality (similar to offset presses)
- Cast iron and steel mainframe

Inks

Aqueous pigment inks (CMYK)

Data Stream

PS, PDF, PDF/VT-1 and 2, PDF/X, TIFF, JPEG, PPML 3.0, Creo® VPS, Fiery® FreeForm™ Plus

Software Support

- RICOH ProcessDirector™
- RICOH Supervisor™
- RICOH TotalFlow BatchBuilder™
- RICOH TotalFlow™ Producer

Included Fiery® Software

- Fiery® Graphic Arts Pro Package (5-year subscription)
- Fiery® Impose Plus (5-year subscription)
- Fiery® JobFlow™ Base
- Fiery® JobExpert
- Fiery® Hot Folders

Optional Fiery® Software

- Fiery® Color Profiler Suite
- ES-3000 spectrophotometer
- ES-6000 spectrophotometer
- Fiery® JobFlow
- Fiery® Integrated Workstation (stand, monitor, keyboard and mouse)



Connect with an inkjet specialist at
takealookatricohproduction.com/pro-z75



Specifications are subject to change.

Ricoh USA, Inc., 300 Eagleview Blvd, Exton, PA 19341, 1-800-63-RICOH.

©2023 Ricoh USA, Inc. All rights reserved. Ricoh® and the Ricoh logo are registered trademarks of Ricoh Company, Ltd. All other trademarks are the property of their respective owners. This document is for informational purposes only and this document and any related services or products described herein are not intended to provide any legal, regulatory, compliance, or other similar advice. You are solely responsible for ensuring your own compliance with all legal, regulatory, compliance, or other similar obligations. While care has been taken to ensure the accuracy of this information, Ricoh makes no representation or warranties about the accuracy, completeness or adequacy of the information contained herein, and shall not be liable for any errors or omissions in these materials. Actual results will vary depending upon use of the products and services and the conditions and factors affecting performance. The only warranties for Ricoh products and services are as set forth in the express warranty statements accompanying them.

RICOH
imagine. change.